



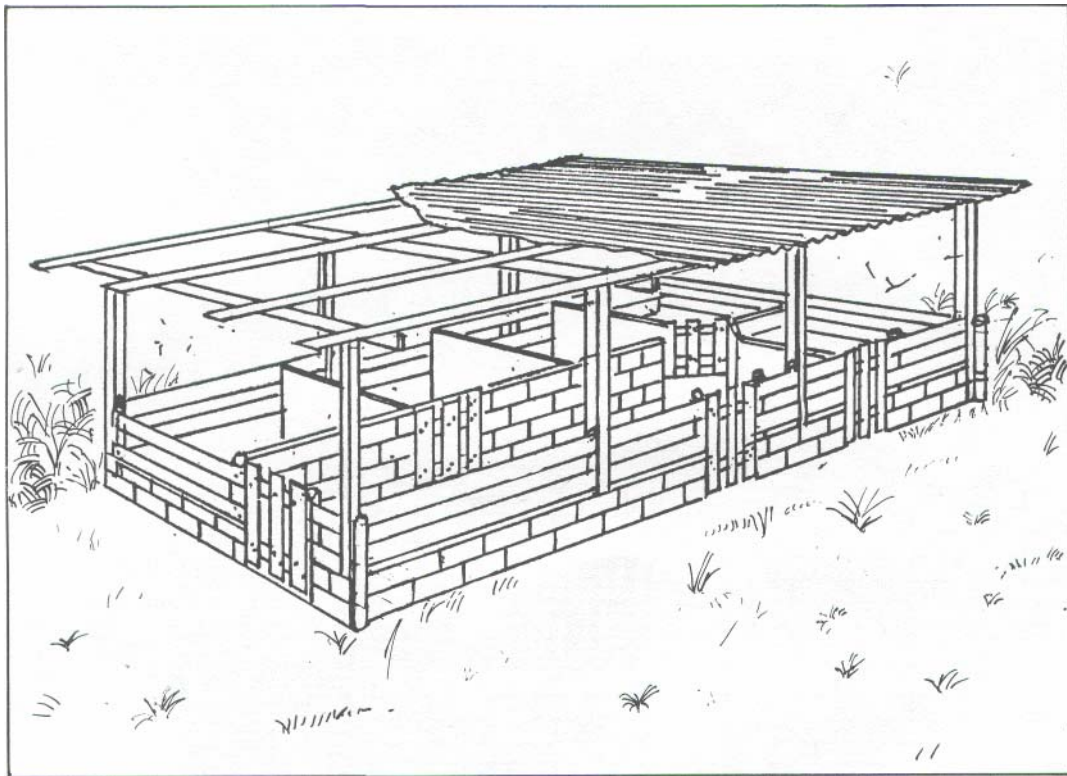
**CARDI**  
CARIBBEAN  
AGRICULTURAL RESEARCH AND  
DEVELOPMENT INSTITUTE

PRINTED DECEMBER 1988  
ORDER NO. AP-F / 25 - 88

# Factsheet

## Design for a Swine Breeding Unit

Harold Patterson & Gerald Proverbs



The housing unit design supplied in this factsheet can be modified to meet the needs of the farmer. Good housing creates a healthy, comfortable environment which keeps pigs happy and productive.

### LOCATION

Pens for swine should be located on a well-drained site. A southern slope on well-drained soil is preferred.

Barn roofs should slope away from the exercise area or eave troughs should be used to run water away from the pens.

Barns should have the face opening away from the prevailing winds. Check with your Ministry of Agriculture to determine in which direction prevailing winds blow.

### VENTILATION

It is necessary that swine in confinement or shelter have adequate ventilation.

The block wall on the side with the farrowing and weaning/ rearing pens should have spaces about 2 - 3 in between the blocks above the fifth block course. This allows draft free good air circulation, and thereby preventing build up in humidity.

### ROOF

Roof construction can be gabled or flat, the design shows a gabled roof which is more costly to build.

### BACK AND SIDEWALLS

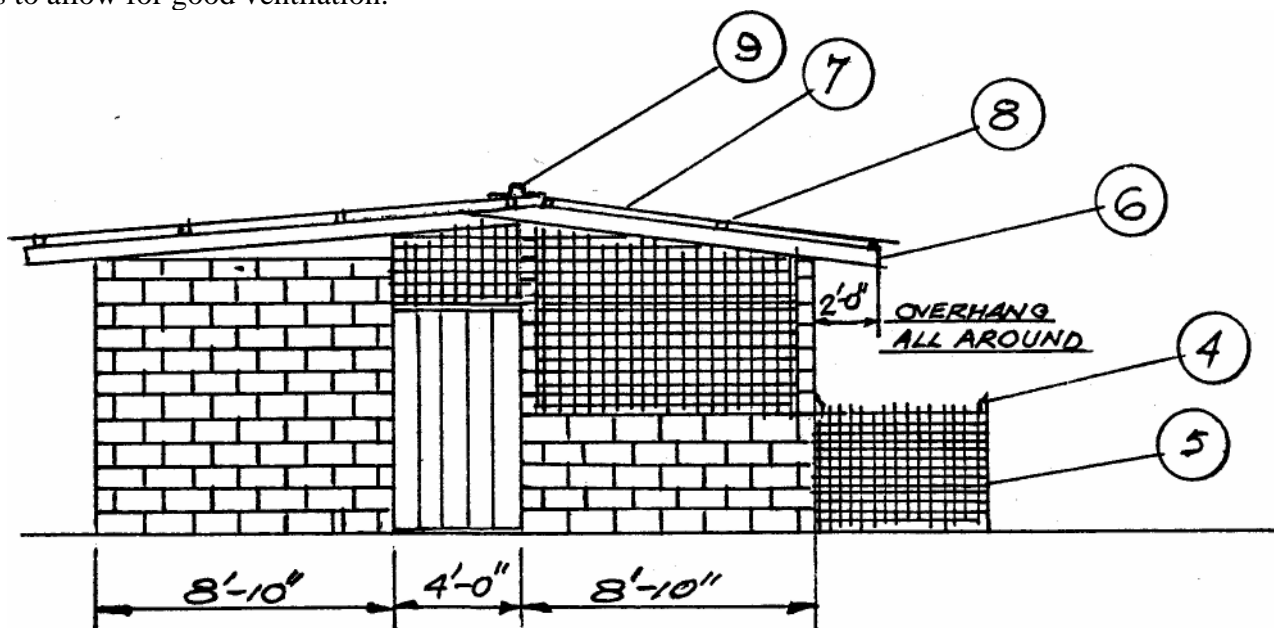
These walls should be solid for the first five courses. Beginning on the six course and up to the roof a space of 2 - 3 in, should be left between the blocks to allow for good ventilation.

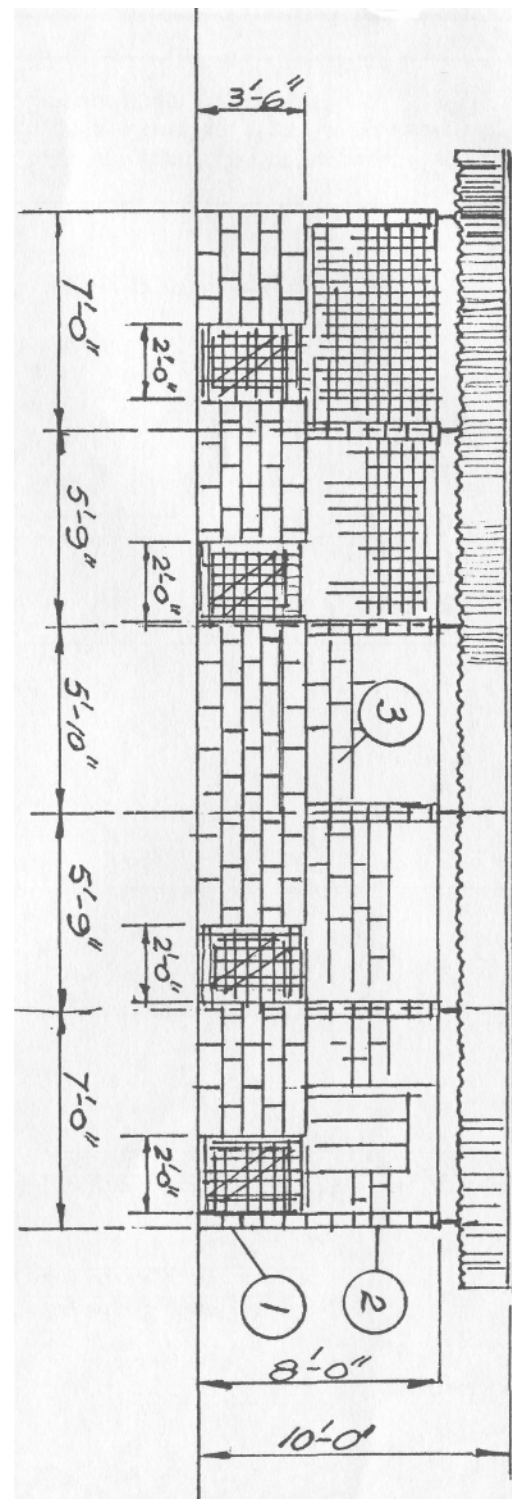
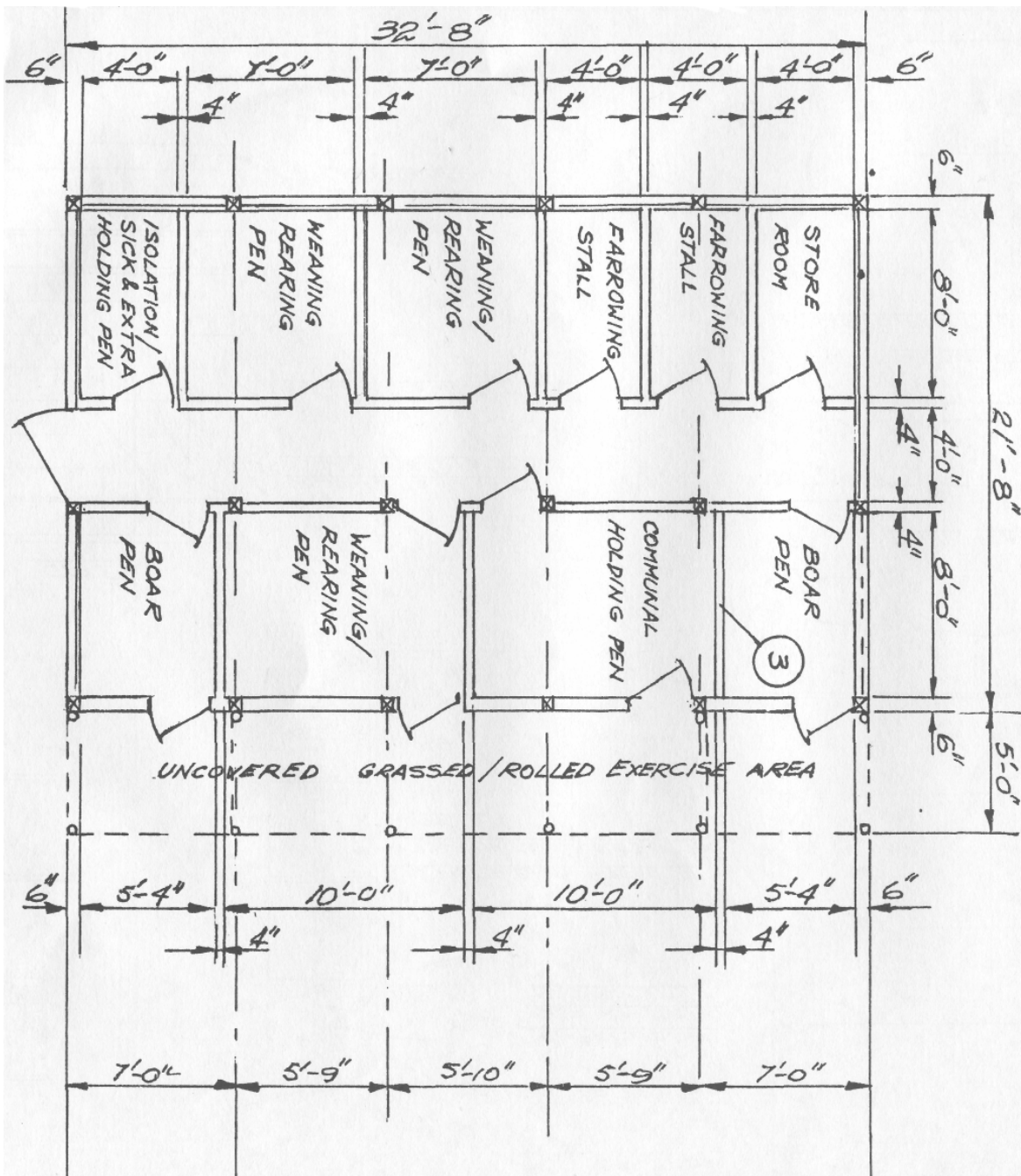
### FLOOR

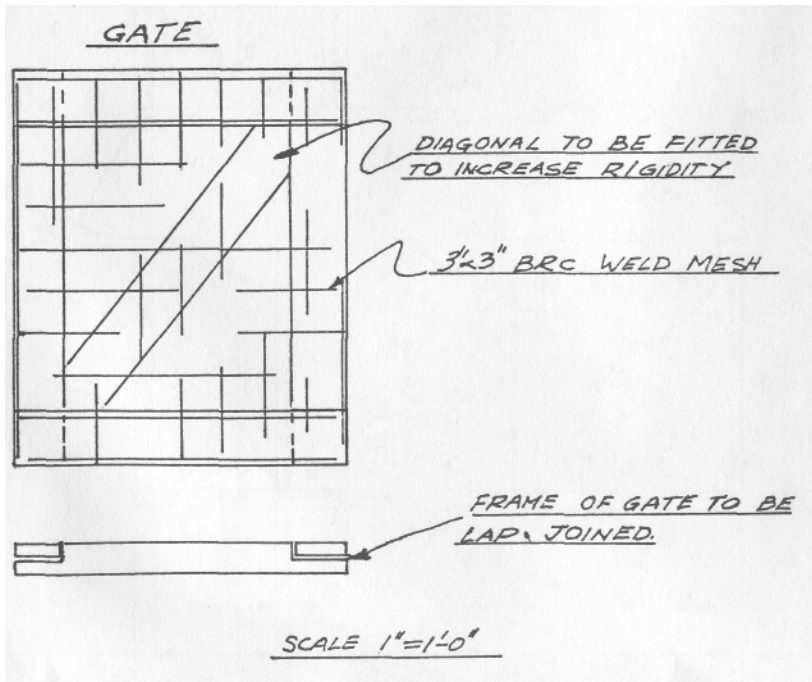
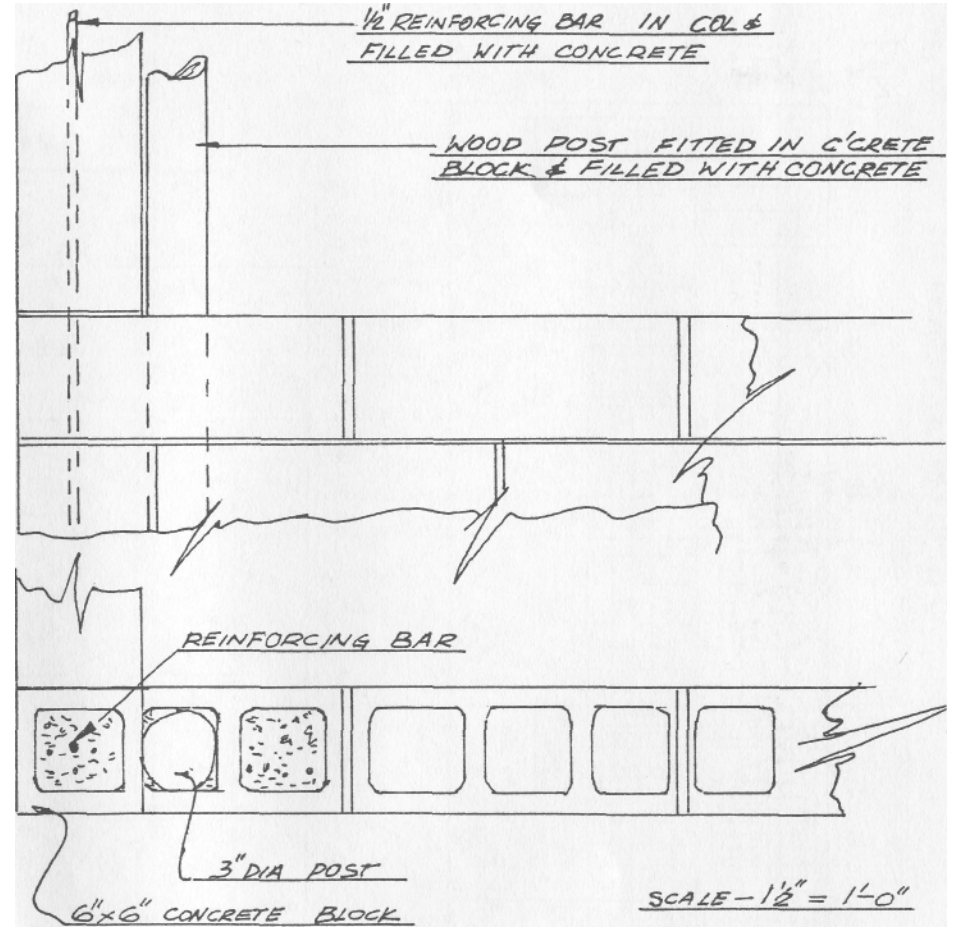
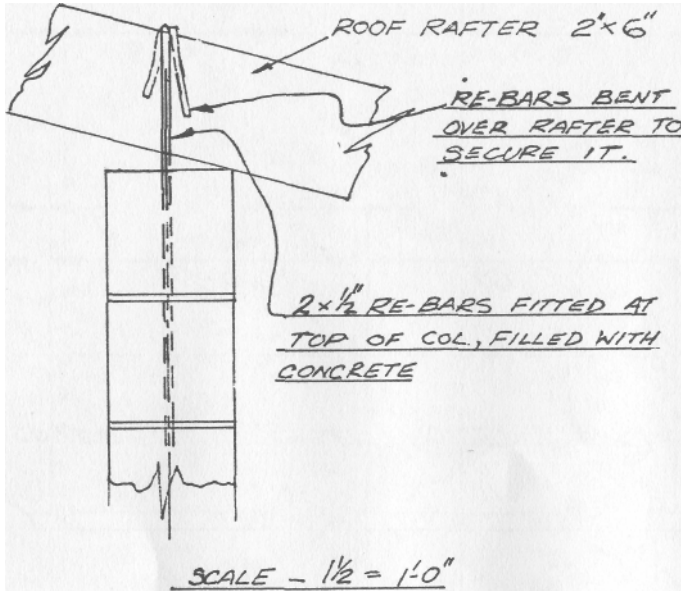
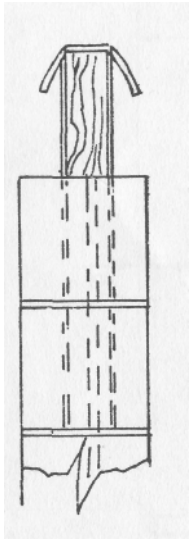
Floors should be made of concrete. They should not be smooth finished as they get slippery when wet which can lead to serious injuries to mature pigs.

It is best to scarify the floor surface with grooves 1 1/4 in apart. The concrete should be laid to provide a 1% slope to drains to ensure a dry floor.

11	6	1" x 8" x 14'-0" LG. P. PINE FOR DOORS
10A		ADEQUATE QTY OF NAILS, STAPLES, HINGES, HASPS & STAPLES OR LATCHES AND SCREWS
10	12	1" x 6" x 14'-0" P. PINE FOR GATES
9	6	15" RIDGE CAP x 6'-0" LG
8	20	2" x 4" x 18'-0" LG P. PINE OR G. HEART
7	68	G.I. SHEETS - 51 x 8'-0" LG & 17 x 7'-0" LG
6	6A	2" x 6" x 14'-0" & 16'-0" P. PINE OR G. HEART
5	44'	3" SQ x 7'-0" WIDE WELD MESH
4	10	3" DIA. WALLABA x 6'-0" LG POSTS OR 3" SQ G. HEART
3	360	4" x 8" x 16" CONCRETE BLOCKS
2	138	6" x 6" x 8" HALF BLOCKS
1	535	6" x 8" x 16" CONCRETE BLOCKS
Nº	QTY	DESCRIPTION
<u>SWINE BREEDING UNIT</u>		
DRAWN BY <i>[Signature]</i>		SCALE 1/8" = 1'-0"







GENERAL CONSTRUCTION DETAILS.



Support was provided for this publication by the Canadian High Commission, Barbados from the Canada Fund.