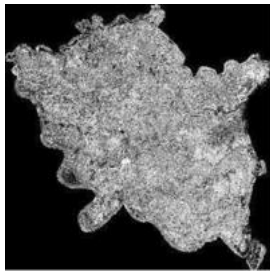


# Environmental change analysis using satellite imageries

Environmental change analysis using satellite imageries in MapAsia 2005, Djakarta, Indonesia

Changing environment is degrading natural resources and greeneries, making water pollution and pushing human health into hazard are major concerns in the delta. In this study presented in the International congress MapAsia 2005, Thai Binh as a representative province in the delta has been selected for environmental changes analysis. The main objective of the study is to monitor the environmental changes and help to develop a RS&GIS based diagnostic methodology for pig production at the province...



[e3p\\_August05\\_thapa\\_MapAsia.pdf\[1,23kB\]](#)

No